

MEET OUR 2023 PRESENTERS

ALLISON ACERRA, MA, CCC-SLP

Allison Acerra is the Coordinator of Speech Language Services at the Cleveland Clinic Center for Autism. She oversees speech language services for the Lerner School outpatient department and services students ages 2-22. Allison provides direct speech - language therapy and evaluates and implements use of AAC systems. Her clinical interest include apraxia, functional communication training, early literacy skills, social language, and collaboration. Allison has presented on various topics at the state and national level.



HANNAH AGOSTON, MA, CCC-SLP

Hannah Agoston is a speech-language pathologist, founder of Encouraging Words therapy practice and Therapy Director at McGuire Orthodontics and Facial Orthopedics. Ms. Agoston is a Breathe Ambassador and presents trainings, seminars, and workshops in the areas of Orofacial Myofunctional Disorders (OMDs) and Orofacial Myofunctional Therapy (Myo). She has provided in-person and teletherapy services for OMD in collaboration with dentists and orthodontists since 2020. She provides clinical supervision to graduate clinicians in the area of Orofacial Myofunctional Therapy assessment and intervention to youth and adults with language, articulation, swallowing, and breathing disorders.



SARAH BARNETT, MEd, MA, CCC-SLP

This is my 7th year as an SLP in the Primary School setting (Preschool, Kindergarten, and First Grade) at the Butler County Educational Service Center. While I love the variety of treatment I get to provide to young children with wide ranging communication needs, I am particularly passionate about using language rich books to foster receptive and expressive language skills in this population. Using books in therapy is engaging, fun, and effective. Children's literature is fertile ground for developing functional communication skills and much more.

ELLEN BONK, MA, CCC-SLP

Ellen Bonk is a supervisor of speech-language pathology services for Columbus City Schools and is an active member of the Ohio School SLP/AUD Supervisory Network.



ANGELA BROUHARD, MA, CCC-SLP

Angela Brouhard is the Speech-Language Pathology Coordinator, preschool speech-language pathologist at the Madison Champaign Educational Service Center and is an active member of the Ohio School SLP/AUD Supervisory Network.



KATY CABBAGE, PHD, CCC-SLP

Dr. Katy Cabbage is an assistant professor in the Department of Speech and Hearing Sciences at Washington State University and former school-based speech-language pathologist. She is specifically interested in identifying predictors related to difficulty acquiring literacy in children with speech sound disorders and/or language impairment. She has presented nationally on topics related to speech sound disorder interventions, particularly in school-based settings and delights in the opportunity, whenever she can, to meet school-based SLPs around the country.



CHARLES H. CARLIN, PHD, CCC-SLP

Dr. Carlin is an associate professor at The University of Akron. In addition to teaching in the School of Speech-Language Pathology and Audiology, he was the primary investigator on the Caseload Ratio Study. He created resources on the workload approach for the Ohio Department of Education and Ohio Master's Network Initiatives in Education (OMNIE). He teaches courses in literacy, school-based speech-language pathology services, articulation and phonology disorders, research methods, and multicultural considerations for clinicians. Before coming to the University, he worked as a school-based SLP, speech-language supervisor, and special education supervisor.



DIANNE CLEMENS, MA, CCC-SLP

Dianne Clemens is Director of Related Services for Butler County Educational Service Center in southwest Ohio. She has worked in the field of speech-language pathology for over 30 years. She is an active member of the Ohio School SLP/AUD Supervisory Network.

DON D'AMORE, MA, CCC-SLP



Don D'Amore served as a Cleveland Metropolitan School's district-wide Alternative Augmentative Communication Speech Language Pathologist (AAC SLP) specialist for over 22 years until his retirement in 2021. Prior to this, he was a school-based SLP for the same district for 13 years. In addition to his school-age population experiences, Mr. D'Amore has worked part-time as an SLP for over 30 years with adult individuals using AAC systems for New Avenues to Independence supported living facilities for adults with developmental disabilities. Mr. D'Amore has presented on topics of the profession at ASHA as well as numerous times at OSSPEAC and OSLHA. He is a past president of the former NEOSHA. Mr. D'Amore has also been the co-owner of SpeechPage.com Publishing Co. since 2005. SpeechPage and its affiliated TpT Store feature speech language and other educational materials which Mr. D'Amore has both illustrated and designed. Their product line is also distributed world-wide by several different educational catalog companies. In October 2009, Mr. D'Amore was the recipient of the annual "Honors of the Profession" Award of the Ohio School Speech Pathologist and Educational Audiologist Association (OSSPEAC).

JANET DESGEORGES



Janet DesGeorges lives in Boulder, Colorado with her husband Joe and is mom to three daughters, including Sara, a now young adult, who is deaf/hard of hearing. She is a co-founder and Executive Director of Hands & Voices Headquarters. Janet has presented to groups worldwide about the experiences of families as they journey through life with a child with deafness or hearing loss. Ms. DesGeorges is the author on the chapter for Family Support in the NCHAM e-Book, the co-author of the book Educational Advocacy for Students who are Deaf and Hard of Hearing: The Hands & Voices Guidebook, and many other publications. Janet currently serves as a trainer for the Hands & Voices Advocacy, Support and Training (ASTra) Program. As an educational advocate, Janet believes in the principles and guiding philosophies of Hands & Voices towards a parent-driven, professionally collaborative approach when supporting families in the education years. Professionals and parents can partner together to achieve appropriate outcomes for children who are deaf or hard of hearing.



LINDSEY DINO, MA, CCC-SLP

Lindsey Dino is a speech-language pathologist with 10 years of experience working with students from preschool through high school with a wide array of needs and abilities. Lindsey is currently serving as the preschool itinerant speech-language pathologist for the Miami County Educational Service Center where she has worked in a variety of SLP roles. Lindsey has been a preschool therapist for all of her career and strives to find creative ways to maximize student outcomes. She has presented on increasing language richness in preschool programming locally and at the state level.



MICHELE DOLENSKY, MA, CCC-SLP

Michele Dolensky has been a speech-language pathologist for 23 years. She has been working at the Stark County Educational Service Center for over 10 years. At the SCESC she is currently a member of the ATAAC (Assistive Technology Augmentative Alternative Communication) Team, Feeding and Swallowing Team, and serves as the SLP for students with autism in our RISE (Reaching Independence through Structured Education) program. The ATAAC Team presents several AAC courses annually at the Stark County Educational Service Center, including Introduction to AAC, Functional AAC Assessment, Intervention with Students with Complex Communication Needs, AAC in the IEP, and AAC Funding. Her previous experience includes a residential facility for children with developmental disabilities, home based early intervention, skilled nursing facilities, parochial and charter schools, and Stark County Board of DD Rebecca Stallman Southgate School. Michele received her bachelors from the University of Akron and her masters from Kent State University. She is a member of ASHA. She is a LAMP Certified Professional from the Center for AAC and Autism. She is also a RESNA Certified Assistive Technology Professional (ATP).

TAMARA DUJMOVIC-BRACAK, MA, CCC-SLP

Tamara Dujmovic-Bracak is a speech-language pathologist working for the Cleveland Clinic Center for Autism in the early childhood division. Tamara's clinical interests include functional communication training, AAC, and social skills training. She has presented on AAC at the state level.

ALLYSE GASTEL, MA, CCC-SLP

Allyse Gastel is a school-based speech language pathologist with 9 years of experience across Tennessee, Kansas, and currently Euclid, OH. Her experience has been at the elementary level, working with students across multiple settings, including single- or center-based classrooms. This has given her extensive experience with augmentative and alternative communication systems, which led to her current position as the AAC Specialist for Euclid City School District. Allyse has presented on this topic to the SLPs and OTs in ECSD.

**DAVE GORDEY, PHD**

Dave Gordey has been a pediatric audiologist for over twenty years. Dave is the director of pediatric audiology and research for Oticon and an adjunct professor at Western university. Dave's current research projects include pediatric hearing aids, unilateral hearing loss, functional communication deficits in children with normal peripheral hearing, and the social and emotional development of children with hearing loss.

LAUREN GREENLIEF, MA, CCC-SLP

Lauren Greenlief is a speech therapist working in both the school and private practice settings. She owns and operates the private practice Inspire Connections Therapy, located in Twinsburg, Ohio. Her practice focuses on AAC and gestalt language processors. Her model puts equal emphasis on support for the child and the family through the language development process. She has also spent the last 8 years working in various school districts throughout Northeast Ohio from preschool - 12th grade. Lauren holds an assistive technology graduate certificate and has years of clinical experience with AAC. She has presented on AAC and gestalt language processing locally. She has contributed content for AAC and GLP courses that are provided worldwide and co-admins the AAC and GLP Facebook Group. She is a natural language acquisition trained therapist through the Meaningful Speech course.

SUSAN HASELEY, MS, CCC-SLP

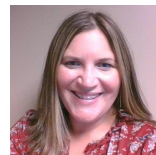
Susan Haseley is a graduate of Illinois State University, receiving both her bachelor's and master's degrees. She has presented nationwide at state conventions, predominantly regarding the R sound. Susan has called Illinois, Pennsylvania, and Ohio home, having worked in school districts, birth to three clinics, nursing homes, and hospitals. Pediatrics is where she found her passion, and while being retired from school-based work, continues to seek answers to helping children achieve optimal communication abilities. Susan holds a patent for the Bite-r, the only device designed to increase tongue tension. Her sessions include a high level of audience participation to raise awareness of the errors our clients make.

**BECKYANN HARKER, MA, CCC-SLP**

School-based speech-language pathologist with 25 years of pediatric speech therapy experience. Doctoral candidate in special education with dissertation research project examining the effectiveness of rich vocabulary intervention on comprehension for 3rd grade students with language learning disorders.

JULIE HAUCK, MA, CCC-SLP

Julie Hauck is a coordinator at Hamilton County Educational Service Center. She supports supervisors, speech-language pathologists, and sign language interpreters. She has been an SLP for over 20 years and is an active member of the Ohio School SLP/AUD Supervisory Network.

**ALLISON HOFFMANN, MA, CCC-SLP**

Allison Hoffmann is currently the Assistant Director of Student Services with the East Central Ohio Educational Service Center. She has worked in the field of speech-language pathology and special education for 14 years and represents her region as an active member of the Ohio School SLP/AUD Supervisory Network.

MICHELLE HU, AUD. CCC-A

Michelle Hu has been a pediatric audiologist for over 12 years working specifically with diagnosis, hearing amplification, cochlear implant evaluation, programming and aural rehabilitation. Something unique about her is that she grew up hard of hearing herself. She was fit with hearing aids at 3 years and now utilizes bilateral cochlear implants. Her personal experience lends to her uncanny ability to relate and be a role model for others with hearing loss and source of strength and hope for parents of children with hearing loss. As a military spouse and mother of three, Michelle strives to balance family life, clinical practice and entrepreneurship. During maternity leave with her second child, she found herself missing the relationships created in the clinic with patients and parents. Thus Mama Hu

Hears was created as a space where she shares personal and professional experiences with hearing loss and the field of audiology. When thousands of deaf/hard of hearing (DHH) people and parents of DHH children reached out to her for help, guidance and to share their stories, Michelle knew she had to do something more. She has created an online program titled "My Child Has Hearing Loss, Now What?" to support anxious and doubtful parents through their family's DHH journey. Her mission is to serve and empower children/families - especially those who are underserved and underrepresented. Michelle has lectured from both a personal and professional point of view - for the patient, as the patient and as a liaison between patients and professionals. She has presented nationwide for school districts across the United States, undergraduate and graduate audiology and deaf education courses, several local Hands & Voices chapters, Hands & Voices leadership, EHDI Conference, ALDACon, HLAA and AudiologyOnline.



LAURA HVIZD, MA, CCC-SLP

Laura Hvizd is an associate professor, clinical supervisor, and Department Chair of Communication Sciences and Disorders at Baldwin Wallace University in Berea, Ohio. The main focus of her professional work is clinical supervision of graduate students doing evaluation and treatment with pediatric clients 0-5 years of age. She has been a speech-language pathologist for 20 years and has worked in several settings including inpatient and outpatient hospital positions, private practice, and schools.

JANICE E JACKSON, PHD, CCC-SLP



Janice E. Jackson is president of Speaking Strategies Inc. and a clinical service provider for Dekalb County School District in Georgia. She earned her Ph.D. at the University of Massachusetts Amherst, where she contributed to development of the Diagnostic Evaluation of Language Variation (DELV) non-biased assessments. She has taught and presented research on African American English and non-biased assessment nationally and internationally. As a professor, she has taught courses on language acquisition, disorders, cultural linguistic diversity (CLD), and research methods. Her research has been published in a variety of peer-reviewed journals including the Journal of Speech, Language, and Hearing Research, Language Speech and Hearing Services in Schools, Developmental Psychology, Studies in Theoretical Psycholinguistic, and Topics in Language Disorders.

CARMEN JAMIS, AUD, CCC-A



Carmen Jamis is the senior pediatric audiologist for the Hearing Implant Program at the Cleveland Clinic Foundation. She works with pediatric bone conduction devices, cochlear implants, and hearing aids. She provides pediatric audiologic evaluations, newborn diagnostic electrophysiologic assessments, and sedated electrophysiologic assessments. Additionally, she is the audiology coordinator for the Pediatric Hearing Management Clinic (PHMC). Prior to her current position, Dr. Jamis was on staff at Walter Reed National Military Medical Center in Bethesda, MD, and Children's National Medical Center in Washington, DC. She was adjunct faculty at Gallaudet University and clinical faculty in the Otolaryngology Residency Program at Walter Reed. Dr. Jamis earned her AuD. at Gallaudet University in Washington, DC. In 2014, she completed a residency in pediatric audiology at UPMC Children's Hospital in Pittsburgh, PA. Dr. Jamis has a number of clinical and research interests including pediatric diagnostics, hearing implants, and early access to communication for children with hearing loss.

SHONTAYE GLOVER JONES, MS, CCC-SLP



Shontaye Glover Jones is a pediatric speech-language pathologist and founder of Having Our Say, LLC. She is a proud alumnus of William Paterson University and Morgan State University. In addition to her clinical work, Shontaye has presented virtually and in-person to over 20,000 parents, educators, speech-language pathologists and professionals worldwide. Shontaye is committed to promoting language development through literacy and increasing diversity in children's literature through social media at @havingoursay. Her debut picture book, Liam's First Cut, centers family and community, while also normalizing neurodiversity as Liam, an autistic Black boy, prepares for his first trip to the barbershop. Liam uses supports from his family and therapists to manage his expectations and process sensory information leading up to his first haircut. Her latest release, The Season of Yes! a jubilant ode to spending summer in the city. Luce's school year has come to an end and she is eager to enjoy all of her favorite seasonal activities with her mom.

KELSEY KLEIN, AUD, PHD, CCC-A



Kelsey Klein is an assistant professor and director of the Listening and Language in Children Lab at the University of Tennessee Health Science Center in Knoxville, TN. Her research focuses on the effects of auditory access and cognitive skills on the listening and spoken language outcomes of school-age children who use hearing aids and/or cochlear implants. She is particularly interested in identifying malleable audiologic, language, and environmental factors that support effective communication for school-age children and adolescents in everyday life. In one line of research, she examines listening-related fatigue in adolescents with hearing loss. She has previously presented on this topic at national conferences.

BERNADETTE LAUGHLIN, MA, JD

Bernadette Laughlin is a consultant in the Office for Exceptional Children, specializing in supporting related services and special education experts. With a diverse background as a former school speech-language pathologist and special education department head, Bernadette's journey led her to become an attorney. Within the department, she has fulfilled various vital roles, including speech-language consultant, compliance investigator, and coordinator of Ohio's due process hearings. Bernadette possesses an unwavering passion for empowering special education professionals such as school speech-language pathologists, to excel in their vital roles. She is driven by a deep commitment to ensure that these dedicated individuals can fulfill their responsibilities with utmost proficiency and effectiveness.

Recognized for her expertise, she frequently presents on special education topics including the latest updates from the department, throughout Ohio, imparting her knowledge and insights to eager audiences. Additionally, Bernadette hosts the monthly Ohio Related Services Virtual Meet-Up, fostering connection and learning within the professional community. Educationally, Bernadette holds a BS and MA from The Ohio State University. Building upon her foundation, she went on to earn a Juris Doctorate from Capital University, solidifying her legal expertise. As a testament to her dedication and competence, Bernadette is also a member of the Ohio Bar, further enhancing her ability to navigate the legal landscape in her field.

**KELLEY MCCHRISTY**

Kelley McChristy joined STRS Ohio in 2001 after graduating from The Ohio State University with bachelor's degrees in Psychology and Criminology. She has since obtained a professional license as a Certified Retirement Counselor. Kelley has worked in several areas of the STRS Ohio Member Benefits department and is currently a Senior Benefits Counselor.

KATHY McDERMOTT, MA, CCC-SLP

Kathy McDermott is a supervisor at Montgomery County ESC and is an active member of the Ohio School SLP/AUD Supervisory Network.

TANNY MCGREGOR, AUTHOR/EDUCATOR

Tanny McGregor brings over 30 years of professional experience to her creative and engaging sessions. Tanny has served as a classroom teacher, literacy coach, intervention specialist, and preK-12 staff developer. She is the author of three books, *Comprehension Connections: Bridges to Strategic Reading* (Heinemann, 2007), *Genre Connections: Lessons to Launch Literary and Nonfiction Texts* (Heinemann, 2013), and her newest release, *Ink & Ideas: Sketchnotes for Engagement, Comprehension, and Thinking* (Heinemann, 2019). Tanny was also a contributor to the seminal work, *Comprehension Going Forward: Where We Are/What's Next* (Heinemann, 2011). Follow Tanny

on Twitter @TannyMcG and visit her website at www.tannymcgregor.com.

LARRY MEDWETSKY, PhD

Dr. Medwetsky is recently retired from his position as a full professor in the doctoral audiology program at Gallaudet University from 2012-2022. Prior to that, he was Director of Audiology and subsequently VRP- Clinical services at Rochester Hearing and Speech Center from 1992-2012. Dr. Larry Medwetsky graduated with a PhD in hearing and speech sciences in 1994. He has served as an educational audiologist, director of audiology and vice president of clinical services in a large speech and hearing clinic in Rochester NY, and was a professor in the Doctoral Audiology program at Gallaudet University. Dr. Medwetsky has published/presented on many different topics with a special focus on the underlying speech processes and deficits in both individuals with normal hearing and hearing loss. In

addition, he has served on a number of professional committees (AAA Committee that developed guidelines for audiologists concerning the assessment of central auditory processing, and an ASHA Committee for developing guidelines for intervention for SLPs) as well as serving on committees for consumer based organizations (founding board member of the Canadian Hard of Hearing Association) as well as currently serving on the Professional Advisory Board of HLAA.

DAWN MULLER

Dawn Muller is an Assessment Consultant with Western Psychological Services, also known as WPS. She is a Nationally Certified School Psychologist and has been practicing throughout Maryland and Delaware over the past 24 years. Dawn's undergraduate degree is from Old Dominion University, where she studied both Psychology and Communication Disorders. She holds both a M.S. and a Psy.S. degree from Gallaudet University, where she specialized in working with the Deaf Community. Dawn has spent her career working with elementary, middle, and high schoolers in various school settings. Additionally, her specialization and fluency in sign language has allowed her to work as a consultant for children with hearing loss, vision loss, and multiple disabilities. Dawn has also taught at the undergraduate and graduate level as an adjunct professor, including her alma mater, Gallaudet University. She is an active member

of her state and national organizations for School Psychology.



AMY O'BRIEN, MA, CCC-SLP

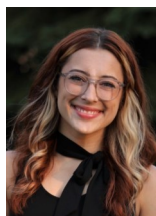
Amy O'Brien is an associate professor in the communication sciences and disorders program. Her primary focus is clinical supervision of undergraduate and graduate students in the Baldwin Wallace Speech Clinic as well as at local community partnerships. She has been a speech/language pathologist for over 25 years and is passionate about clinical education. Her clinical interests include literacy, autism, early intervention and pediatric speech/language development.

CARA M. O'FLANNIGAN, MA, CCC-SLP



Cara O'Flannigan is a speech-language pathologist employed at Encouraging Words, LLC, Southwest General Hospital and Kent State University. At Encouraging Words Cara provides orofacial myofunctional therapy to adults and children who suffer from pain or other symptoms associated with orofacial myofunctional disorders. This therapy is focused on a holistic approach to wellness and often involves communication and collaboration with dentists, orthodontists, allergists, and/or ENTs. Cara is also a clinical faculty member at Kent State University. At KSU she supports graduate clinicians in individual and group therapy both in-person and via teletherapy. She has provided instruction for graduate courses including autism spectrum disorders and motor speech disorders. In addition to her full-time work at KSU, Cara works PRN at Southwest General Hospital providing treatment for speech, language and swallowing disorders in both the acute rehabilitation and inpatient departments.

SARA PEELE, MA, CCC-SLP (SHE/THEY)



Sara (she/they) is a disabled, AuDHD (autistic/ADHD) school-based speech-language pathologist. She works in an elementary school with students with a large range of support needs, with a majority of her caseload being neurodivergent. Sara has spent her professional and educational careers reading and researching about neurodiversity and how to best serve neurodivergent students. This led to her reflecting on her own experiences across her lifetime and learning that in addition to her chronic illnesses, she was also neurodivergent. Sara is a staunch advocate for neurodiversity affirming, trauma informed, evidence-based practices. She has served as a mentor for graduate and undergraduate students, and has conducted professional development trainings within her school district.

MICHELLE PICKETT, MS, CCC-SLP



Michelle Pickett is a speech-language pathologist currently serving the Stark County Educational Service Center. She works with K-12 students in the multiple-disabilities program and is an AAC consultant on the Assistive Technology Augmentative-Alternative Communication (ATAAC) Team. We present several AAC courses annually at the Stark County Educational Service Center, including Introduction to AAC, Functional AAC Assessment, Intervention with Students with Complex Communication Needs, AAC Funding, AAC In the IEP, and AAC and Literacy. Michelle received her bachelor's degree in cognitive science from Northwestern University and a master's degree in communication sciences and disorders from Florida State University. Michelle is the recipient of the SST9 Franklin B. Walter Outstanding Educator Award 2023!

JENNA RAYBURN KIRK, MA, CCC-SLP



Jenna (Rayburn) Kirk was a school speech-language pathologist for 10 years before working full time in educational resource design. She has a passion for creating speech and language therapy materials and writing about current topics in the field on her website TheSpeechRoomNews.com. Jenna has authored over 800 best-selling resources on Teachers Pay Teachers, has been featured in the ASHA Leader, and presents at local, state, and national conventions on topics related to school-based therapy. Jenna completed an assistive technology certificate and has interests in language, literacy, and AAC.

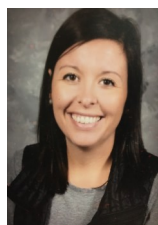


NINA REEVES, MS, CCC-SLP

Nina Reeves is a board-certified specialist in fluency differences, and co-owner of Stuttering Therapy Resources. She is an author of clinical materials, and presenter of professional development workshops. For her contributions as a public school SLP, Nina has received the ASH-F Van Hattum Award, the 2019 ASHA Excellence Award for outstanding contributions to public schools and was recently named Fellow of the Association.

**JUDY RICH, EdD, CCC-SLP, BCS-CL**

Judy Rich is professor of practice in speech-language pathology at the University of Texas at Dallas, and an educational consultant specializing in school related issues for quality speech-language pathology services. She is a board-certified specialist in child language. Judy has written and presented workshops on a variety of topics for school-based SLPs, including the current topic. She served in school districts in Texas as an SLP, special education director, and assistant superintendent. She has also served as President of the Texas Speech-Language-Hearing Association and vice president for finance on the ASHA Board of Directors. Judy currently serves as the 2023 ASHA Past President.

ALI SOLBERG, MA, CCC-SLP

I have been a practicing speech-language pathologist for eleven years. I currently work as the supervisor of speech-language, and hearing services at the Educational Service Center of Lorain County. Prior to this, I worked for North Point Educational Service Center and Kent City Schools. What I have learned from being in all different places and settings is how to be a flexible thinker and how to challenge myself to start thinking “outside of the box.” With that concept at the helm, I have created and have been a part of creating various opportunities for students such as a transition classes, social emotional classroom based lessons, social skills classes, life skills classes, vocational opportunities through coffee cart services, utilizing graduate students to support response-to-intervention services, and a literacy classroom based lessons. I know how hard it can be and how easy it is to feel stuck in a rut in your day-to-day routine, but let me help you to figure out how to shake things up and think “outside the box.”

**CARRIE L. SPANGLER, AUD, CCC-A**

Dr. Carrie Spangler is the lead educational audiologist at the Summit ESC in Ohio and has provided educational audiology services for 24 years. She has a personal journey growing up with hearing loss and uses a hearing aid and cochlear implant. She has presented and published in areas related to school-based services both nationally and internationally. Her areas of interest include educational audiology, teens, peer supports, advocacy, and humanitarian audiology. Dr. Spangler has a blog, hearingspanglish.blog and is the host of the empowEAR Audiology Podcast. In 2021 she received the Fred Berg Award from EAA and the ASHA Fellow Award. In 2022 she received the Kathe Shelby Leadership Award. Presently she serves on the Ohio Speech and Hearing Professionals Board as secretary.

CAROL SPEARS, MA, CCC-SLP

Carol L. Spears is a clinical associate professor in the Communication Sciences and Disorders Department at Cleveland State University. Mrs. Spears is a licensed speech and language pathologist (SLP) receiving her bachelor's degree from Bowling Green State University and master's degree from Cleveland State University. She has over 35 years of experience in the field of communication disorders. Prior to working at Cleveland State University, Mrs. Spears was employed as a SLP in the Cleveland Metropolitan School District for over 30 years. During this time, she serviced students from preschool to 21 years of age with a wide range of communication disorders ranging from mild to severe. She has a special interest and specializes in working with individuals who have significant limitations in the ability to use verbal speech, individuals diagnosed with autism spectrum disorder, and those with significant developmental disorders. Mrs. Spears is the co-author of the book, *Rising to New Heights of Communication and Learning for Children with Autism*.

**KEVIN STUCKEY, MEd, CCC-SLP**

Kevin Stuckey received a bachelor's degree and master's degree in Communication Sciences and Disorders from the University of Georgia. He has worked in a variety of settings including clinical, hospital, home health, and educational systems. In public schools, he worked with a range of students in preschool, elementary, middle, and high school. Kevin is the Supervising SLP Editor of product development at Super Duper Publications.

GREGG THORNTON, ESQ.

Gregg B. Thornton serves as the Executive Director of the Ohio Speech and Hearing Professionals Board and is responsible for managing board operations and licensure requirements for the audiologists, speech-language pathologists, hearing aid dealers, and hearing aid fitters. Mr. Thornton graduated with honors from Howard University in Washington, D.C., receiving a BA in political science and his JD from Case Western Reserve University School of Law. He is a licensed attorney with over thirty years of experience in state government in the area of administrative law. He is frequently invited to speak on topics related to ethics and occupational licensure at statewide and national conferences. Mr. Thornton is an affiliate member with the American Speech-Language-Hearing Association, American Academy of Audiology, and International Hearing Society. He is also a member of the National Council of State Boards of Examiners for Speech-Language Pathology and Audiology (NCSB) and is currently serving on their Board of Directors. In 2022, he was elected to serve as a delegate-at-large on the Audiology and Speech-Language Pathology Interstate Compact Commission. Mr. Thornton has been recognized by the Ohio Speech-Language Hearing Association with its Award of Appreciation and Advocacy Recognition Award, and in 2022 by the Ohio School Speech-Language Pathology and Educational Audiology Coalition with its Kathleen D. Shelby Outstanding Service Award.

**CAMELLIA VARNADO**

Camellia is six-time self-published author, podcast host, inspirational speaker, and proven leader with over 20 years of experience providing exceptional customer service, innovative and strategic process improvement driven results. Camellia also has over 10 years of human resource leadership experience.

**SARAH WARD, MS, CCC-SLP**

Sarah Ward has over 25 years of experience in the treatment of executive dysfunction. Sarah is an internationally recognized expert on executive function and presents seminars on the programs and strategies she has developed with her Co-Director Kristen Jacobsen. Their 360 Thinking Executive Function Program received the Innovative Promising Practices Award from the National Organization CHADD. She has presented to over 1700 public and private schools and organizations worldwide.

NATALIE WARDEGA

Natalie Wardega is the Director of Operations for RePlay for Kids and has been with the non-profit for 16 years. Natalie received a BFA from Ohio University and uses her artistic talents to design new ways to modify toys. Natalie firmly believes that every child deserves access to play and the chance to experience joy and discovery, regardless of their abilities. Natalie's exceptional leadership skills and ability to collaborate effectively with diverse stakeholders have been instrumental in advancing RePlay for Kids' mission. She spearheads initiatives to raise awareness and garner support for the organization's work, forging strategic partnerships with corporations, community organizations, and educational institutions. Through her efforts, Natalie has successfully expanded RePlay for Kids' reach, allowing more children with disabilities to benefit from their life-changing services. When she's not immersed in her work,

Natalie enjoys painting, drawing and photography.

OLIVIA WEISMAN, MED, CALT

Olivia Weisman has over 18 years of experience in education as an intervention specialist, literacy coach, and literacy specialist/consultant. Mrs. Weisman is a Certified Academic Language Therapist and has extensive knowledge and experience in teaching students, specifically those with dyslexia, how to read, spell, and write through a structured literacy approach. She currently serves as the Literacy Specialist and Supervisor with the Educational Service Center of Lorain County, is a member of the International Dyslexia Association and the Reading League, a local certified facilitator of Language Essentials for Teachers of Reading and Spelling (LETRS), facilitator of Keys to Beginning Literacy, and a member of Ohio's Dyslexia Committee. She is a proud mother of three boys that keep her on her toes.

LYNDSEY WELCH, MA, CCC-SLP

Lyndsey Welch is a speech-language pathologist working for the Cleveland Clinic Center for Autism in the early childhood division. She is most interested in working with students with functional communication needs, AAC, and social communication. During a typical day, she collaborates with other SLPs, teachers, administrators, and BCBA's. Lyndsey has presented on AAC at the state level.

BETHANY WHIDDEN, MA, CCC-SLP

Bethany Whidden is currently serving as a Related Services Supervisor for the Miami County Educational Service Center. She has practiced as a speech-language pathologist for 15 years working with students across the age span, from early intervention through high school graduation. Her passion lies in early intervention and preschool, including involving classroom staff in learning best practices for implementation of communication interventions in the classroom. For the past six years, she has served as a supervisor of speech-language pathologists, school psychologists, and social workers. She has presented on increasing language richness in preschool programming locally and at the state level.

MYRITA WILHITE, PHD, AUD, CCC-A

Myrita Wilhite has been an audiologist for over 30 years. Dr. Wilhite is currently the Chair of the Communication Sciences and Disorders Department. She is passionate about teaching audiology and keeps her clinical skills sharp by mentoring students in audiology and aural rehabilitation practice as well as providing direct clinical services in the on campus Speech and Hearing Clinic. Myrita is a firm believer in life-long learning. She earned an undergraduate degree from the University of Cincinnati and a master's degree in audiology from Cleveland State University. She earned a doctor of audiology degree in 2009 from A.T. Still University and a PhD in urban education with a specialty in learning and development at Cleveland State University. Myrita has a special interest in Diversity, Equity and inclusion and has participated in research on microaggressions experienced by students in CSD programs. The article was published in the American Journal of Speech Language Pathology in 2021.



BRIGETTE WILSON, MA, CCC-SLP, MPH

Brigitte Wilson has been a speech-language pathologist for 25 years. She is the Clinic Administrator and a clinical associate professor in the Department of Communication Sciences and Disorders at Cleveland State University. Mrs. Wilson teaches undergraduate and graduate courses, particularly practical and diagnostic methods. Mrs. Wilson has a heavy concentration in working with individuals with autism, preschoolers with disabilities, and augmentative alternative communication device users. She is currently interested in innovative approaches in clinical education and supervision (particularly simulation), cultural and linguistic diversity, and health equity.



KATHLEEN M. WOODWARD, EdS, NCSP

In her role as Senior Assessment Consultant for Pearson, Ms. Woodward consults with school districts throughout the Western and Central U.S. and Canada on the topics of psychological and psycho-educational assessment practices. She regularly presents on assessment related topics for professionals both in their organizational settings and at state and national conventions. Current areas of research include best practices in assessment to address the youth mental health crisis and assessment of executive functions and ADHD in children and adolescents. She is a nationally certified school psychologist and an active member of the National Association of School Psychologists.

AMANDA ZIMMERMAN, MA, CCC-SLP



Amanda Zimmerman is the owner of Amanda Zimmerman Speech Language Pathology, LLC. In 2014, she completed a year-long training with the Apraxia-Kids organization and is "recognized by Apraxia Kids for Advanced Training and Expertise in Childhood Apraxia of Speech (CAS)". Amanda has spoken at the Apraxia-Kids national conferences in 2015, 2016, 2018 on a wide range of apraxia related topics. She has also presented to the Franklin County Help Me Grow program, as well as teachers/SLPs/parents in Mercer County's professional development day. In 2017, she presented at the Ohio Speech-Language-Hearing Association's annual meeting on evaluation and treatment techniques for CAS. In 2021, Amanda taught the speech sound disorders course at Ohio State's Speech & Hearing Department for first year graduate students, which included CAS treatment and evaluation techniques. In 2022, Amanda taught a clinical seminar in speech and language evaluations at OSU, which included evaluations of motor speech disorders. Lastly, she helped analyze speech samples of children with motor speech disorders as part of Dr. Janet Vuolo's research studies at OSU on CAS in the fall of 2022.