



**The Ohio School Speech Pathology
Educational Audiology Coalition**

September 2025 Newsletter

PRESIDENT'S MESSAGE

As we start a new school year, I'm very thankful for the passion and dedication you show every day. Our common goal of supporting Ohio's students' educational and communication needs has never been more vital.

This year, OSSPEAC will keep working hard to support you through meaningful professional development, opportunities to connect with colleagues, and strong advocacy for our field. I hope you'll join us for the upcoming conference, share your ideas, and lean on this community for both resources and encouragement.

This edition of the newsletter highlights statewide resources for school-based audiologists and SLPs. You might want to keep this newsletter accessible for use throughout the school year.

Thank you for the impact you have on Ohio's students and families. I'm excited about what we'll achieve together this year!

Thank you,
Bethany L. Whidden
President, OSSPEAC



resources



The Ohio School Speech Pathology
Educational Audiology Coalition

September 2025 Newsletter

OCALI LENDING LIBRARY

OCALI (Ohio Center for Autism and Low Incidence) maintains a comprehensive website with resources related to assistive technology, literacy, assessment, and parent support. They also offer a free lending library available to anyone 18 years or older who lives or works in Ohio. You can easily search their catalog online here:

<https://ocali.org/lending-library>

MENU OCALI LOGIN SEARCH

Lending Library

The OCALI Lending Library is available to any person over the age of 18 residing or working in the state of Ohio. To create a Lending Library account, please submit your information using the registration form. Once your application has been processed and your account has been established, we will notify you via email.

For assistance with the OCALI Lending Library, please contact OCALI toll free at 614-410-0321 and ask for the lending library or email lendinglibrary@ocali.org.

[Browse All Lending Library Resources](#)

- Catalog
- How to Register
- How to Search Items
- AT Devices
- Curriculum Support Kits
- Assessment Tools



The Ohio School Speech Pathology Educational Audiology Coalition

September 2025 Newsletter

OMNIE REFRESHED

Ohio Master's Network Initiatives in Education (OMNIE) Learning Management System Modules

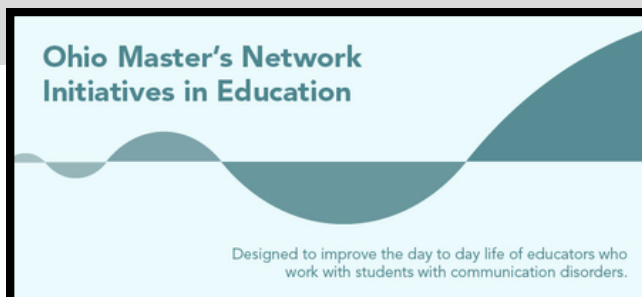
The OMNIE modules provide free online continuing education! Ohio Speech-Language Pathology and Educational Audiology experts created these modules to help school-based professionals.

A sampling of the topics includes Ethics and Supervision for ASHA/OSHPB requirements, Supporting Children Who Are Deaf or Hard of Hearing, Literacy, Assisted Feeding, Preschool Literacy, and many more. A total of 17 modules will be available. Four modules are now accessible for you to view. Certificates of completion are issued after passing a quiz following each module.

You need to log in to your OH|ID account and open the Learning Management System application. Once in the system, search for OMNIE or Speech Language Pathologists using the course catalog in the upper right corner of the screen.

For more information, please refer to the Learning Management System page on the Ohio Department of Education and Workforce's website or contact Andrea DiFrancesco at Andrea.DiFrancesco@education.ohio.gov.

The OMNIE modules will be demonstrated at the OSSPEAC conference, and there will be a vendor table where you can stop by to ask questions about this fabulous resource.





September 2025 Newsletter

OSSIPAC COMMUNITY OF PRACTICE

OSSIPAC has built a supportive network for Educational Audiologists and Speech-Language Pathologists. Our goal is to assist AUDs and SLPs in their demanding work and to help schools attract and keep highly qualified communication professionals. Working in schools can be challenging. We want to support early service professionals, so please consider joining us!

The kickoff event for the 2025-2026 school year will be held on Thursday, September 11th at 6:30 PM on Zoom, and it is FREE! CEUs will be available for this event, titled "Start Strong!" We will have three presenters discussing how to set up your caseload, ETRs, and IEPs for maximum success this school year. We will also share information on continuing education requirements for the Ohio Board of Speech and Hearing Professionals, ASHA, and AAA.





September 2025 Newsletter

SEPTEMBER

11

6:30 - 8:00 PM

WEBINAR

START STRONG!

HACKS AND TIPS FOR SETTING UP A GREAT SCHOOL YEAR

Presented By:
William Bolden III, PhD, CCC-SLP
Mandi Hinton, Aud, CCC-A
Sarah Prahler, MA, CCC-SLP

FREE for Ohio School SLPs and Ed Audiologists

This FREE webinar aims to provide ideas for caseload and therapy hacks that will streamline your school start as well as keep from those nasty last minute surprise IEPs as you move through the 2025-2026 school year! SLPs and AUDs working in the schools are all invited to attend! We will also have an update on Community of Practice as well as new OSSPEAC initiatives for this year!

0.15 ASHA CEU is available for attending this event OR
1.5 PDCH available for attending this event

Time Ordered Agenda

6:30 PM - 6:40 PM - Welcome and Speaker Introductions
6:40- 7:00 PM - Ideas to streamline Paperwork Deadlines and Treatment Planning
7:00- 7:20 - CEUs...What do I need?
7:20-7:40 - Educational Audiology connections & Updates
7:40 - 7:50 - Update on CoP
7:50-8:00 - Q & A

Learner Outcomes

After attending this session, participants will be able to:

1. Explain the difference between a professional development continuing education unit and an ASHA continuing education unit.
2. Identify systems to enhance organization and streamline paperwork deadlines and therapy planning.
3. State one solution to common systemic barriers (e.g., caseload demands, funding, access to equipment) through collaborative problem-solving.



ASHA CE
APPROVED PROVIDER

**Ohio School Speech Pathology
Educational Audiology Coalition
(OSSPEAC)**

Introductory Level
0.15 ASHA CEUs

ASHA CE Provider approval and use of the Brand Block does not imply endorsement of course content, specific products, or clinical procedures.



September 2025 Newsletter

ODEW REGIONAL CONSULTANTS

ODEW has created a team of SLP and School Psychologist Consultants to serve throughout the state. Their duties include:

- Leading professional development for district and regional speech-language pathologists and school psychologists on best practices in evaluation and therapeutic interventions.
- Providing training and support to administrators, general education, and special education staff to ensure a cohesive approach to student services.
- Guiding caseload management by offering personalized advice and practical strategies based on a workload approach. Leveraging their field experience, they will empower professionals to navigate caseload challenges more effectively.

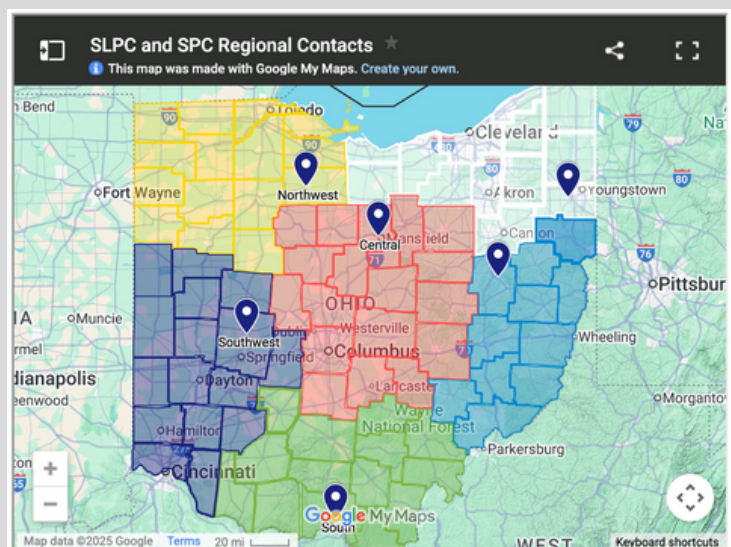
<https://education.ohio.gov/Topics/Special-Education/Related-Services/Regional-Speech-language-Pathology-and-School-Psyc>

Reach out to your area consultants with questions!

Click on the map to
navigate to the website.
Then, click on the



for SLPC and SPC
contact information in
your region.



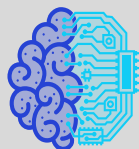


The Ohio School Speech Pathology
Educational Audiology Coalition

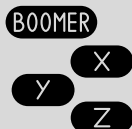
September 2025 Newsletter

RECENT EVENTS

On August 5th, OSSPEAC members had the opportunity to attend two FREE PD sessions.



William Bolden, PhD, CCC-SLP - an assistant professor at Kent State University - presented on the topic of Generative AI.



Abby Foltz Hottle, MA, CCC-SLP & Jasmine Keaney, SLPD, CCC-SLP, CBIS - both assistant professors at the University of Cincinnati - presented on the topic of clinical supervision of students from different generations.

thank you

ASHA FREE CEU - AUGUST

ASHA celebrates its centennial by providing free online professional development. This month, learn practical strategies for implementing the 3:1 Service Delivery Model to manage increasing workloads and uphold service quality. The course offers guidance on optimizing schedules and aligning IEPs with actual service delivery, helping SLPs balance impact and compliance.

Maximize Your
Impact With the 3:1
**Service Delivery
Model**





The Ohio School Speech Pathology
Educational Audiology Coalition

September 2025 Newsletter

EMPOWER. EVOLVE. EXCEL.
OSSPEAC 2025

OCTOBER 12-14, 2025
Quest Conference Center
Columbus, OHio

Sponsored by
psi raising the power of education
— An ESS Company —

 **REGISTER NOW**

<https://osspeac.org/2025-conference/>

CONTACT US

www.osspeac.org

440-745-7065

info@osspeac.org

8840 Greenwood Road, North Royalton, OH 44133