



---

---

---

---

---


---

---

---

2

OMNIE




**Presenters**

**Kathy Jillson, M.A., CCC-SLP**

- Kathy received a stipend from the OMNIE project & registration for the conference from OSSPEAC
- No non-financial information to disclose

**Sue Grogan-Johnson, Ph.D., CCC-SLP**

- Sue received a stipend from the OMNIE project & registration for the conference from OSSPEAC
- Sue co-authored one of the OMNIE modules



---

---

---

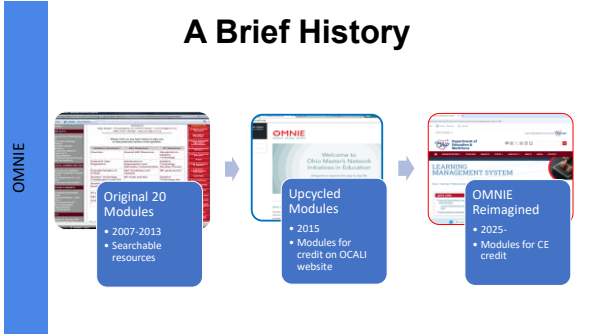
---

---

---

---

---



---

---

---

---

---

---

---

---

4

OMNIE

OMNIE Reimagined Modules Home



---

---

---

---

---

---

---

---

OMNIE



Currently available Modules

- AT & AAC (L. Slater)
- Assisted Feedings in the Schools (J. Packer)
- School-Based SLPs: the missing link to improved literacy outcomes for learners (J. Heim & T. Mail)
- Service Delivery in Speech-Language Pathology (C. Carlin)
- Speech Sound Disorders (T. Farmham)
- Telepractice ( W. Bolden & S. Grogan-Johnson)
- The Ohio Workload Rule for SLPs (C. Carlin)



---

---

---

---

---

---

---

---

2

OMNIE



Expected Modules

- Apraxia of Speech (E. Sizemore)
- Auditory Supports for Professionals Serving Students who are Deaf/HOH (C. Spangler & K. Marconi)
- Compliance (ODEW) (B. Laughlin)
- Developing Language & Literacy Through Play (L. Audet)
- Eligibility (ODEW) (B. Laughlin)
- English Language Learners (N. Mendez)
- Ethics (B. Whidden & L. Dino)
- Preschool Language & Literacy (A. Zito)
- Supervision (D. Clemens & J. Hauck)



---

---

---

---

---

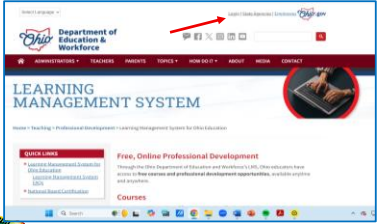
---

---

---

## Let's Get Started

<https://education.ohio.gov/Topics/Teaching/Professional-Development/Learning-Management-System-LMS>




---

---

---

---

---

---

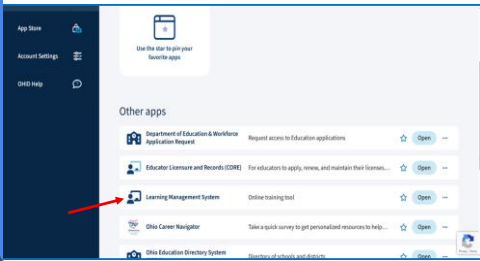
---

---

---

---

## Select the LMS App




---

---

---

---

---

---

---

---

---

---

## Select the Course Catalog and then Enroll in the OMNIE Course




---

---

---

---

---

---

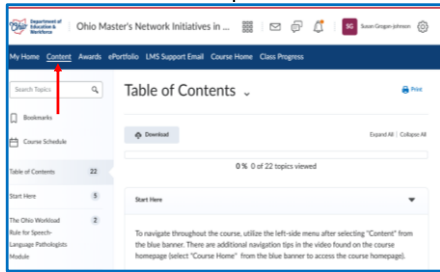
---

---

---

---

Click on the Content tab and then select the course you wish to complete




---

---

---

---

---

---

---

---

### To Register and Access the OMNIE Courses

1. <https://education.ohio.gov/Topics/Teaching/Professional-Development/Learning-Management-System-LMS> and select 'login' at the top of the homepage.
2. Sign in with your OHID or MyOhio account.
3. Find and click on the Learning Management System application.
4. After opening the LMS application, use the **Course Catalog** link to browse and register for courses.
5. Enroll in the OMNIE course.
6. Click on OMNIE from the right-hand side. There is a navigation video you may want to view before moving on.
7. Click on Content from the top navigation bar and then select the module you wish to view.




---

---

---

---

---

---

---

---

### Review of Currently available Modules

1. AT & AAC (L. Slater)
2. Assisted Feedings in the Schools (J. Packer)
3. School-Based SLPs: the missing link to improved literacy outcomes for learners (J. Heim & T. Mail)
4. Service Delivery in Speech-Language Pathology (C. Carlin)
5. Speech Sound Disorders (T. Farmham)
6. Telepractice (W. Bolden & S. Grogan-Johnson)
7. The Ohio Workload Rule for SLPs (C. Carlin)




---

---

---

---

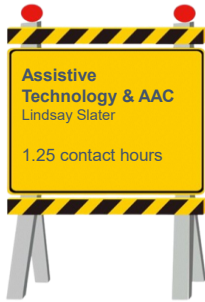
---

---

---

---

OMNIE



Session Objectives

- Overview of AT & AAC for educators & Review for SLPs
- AT & AAC in the school setting, including resources for assessment, strategies for intervention, and resources for funding and materials

---

---

---

---

---

---

---

OMNIE



Session Objectives

- Overview of eating and feeding disorders
- How school districts can create policy and procedures for safe mealtime practices
- Multidisciplinary assisted feeding procedures

---

---

---

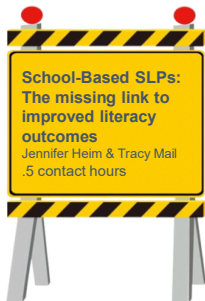
---

---

---

---

OMNIE



Session Objectives

- Understand the ideas of the Science of Reading & the Simple View of Reading
- The role of the SLP in a district's literacy initiatives
- Discuss solutions to barriers regarding SLP involvement in literacy programs

---

---

---

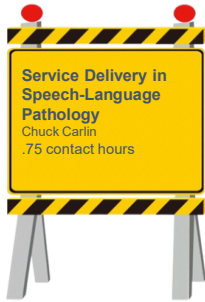
---

---

---

---

OMNIE



Session Objectives

- Understand various service delivery options
- Identify how delivery recommendations should be made & research related to service delivery models

---

---

---

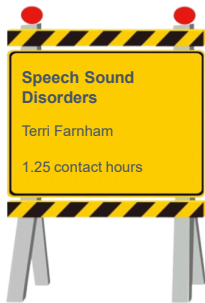
---

---

---

---

OMNIE



Session Objectives

- Identifying & describing the multiple levels and types of support for students with SSDs
- Understand the evaluation process for students with severe speech sound errors
- How to implement effective progress monitoring

---

---

---

---

---

---

---

OMNIE



Session Objectives

- Recognize the key components (security, technology etc) of telepractice service delivery
- Review the evidence base for this delivery model
- Obtain guidelines for the assessment and intervention of school-age students with communication impairments

---

---

---

---

---

---

---



Session Objectives

- Compare the concepts of workload & caseload
- Explain Ohio's two-pronged approach to determining caseload
- Discuss available resources

---

---

---

---

---

---

---

What to Expect with Modules Being Developed

- Apraxia of Speech (E. Sizemore)
- Auditory Supports for Professionals Serving Students who are Deaf/HOH (C. Spangler & K. Marconi)
- Compliance (ODEW) (B. Laughlin)
- Developing Language & Literacy Through Play (L. Audet)
- Eligibility (ODEW) (B. Laughlin)
- English Language Learners (N. Mendez)
- Ethics (B. Whidden & L. Dino)
- Preschool Language & Literacy (A. Zito)
- Supervision (D. Clemens & J. Hauck)



---

---

---

---

---

---

---



---

---

---

---

---

---

---



**Thank you for attending!**

Stop by the OMNIE  
Reimagined  
Table in the Vendor Area



---

---

---

---

---

---

---